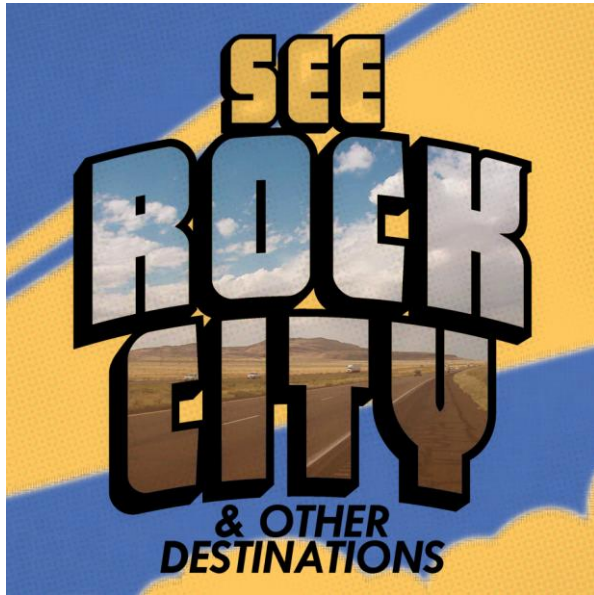




Drama Desk and OBIE Award Winner  
**Transport Group Theatre Company**

Jack Cummings III, Artistic Director    Lori Fineman, Executive Director  
**Present**



Music by **Brad Alexander**  
Book & Lyrics by **Adam Mathias**

Directed by  
**Jack Cummings III**

Produced in association with  
**Benjamin D. Goldberg & Jennifer Orr**

The Duke on 42<sup>nd</sup> Street  
A New 42<sup>nd</sup> Street Project  
229 West 42<sup>nd</sup> Street



## About Transport Group Theatre Company

Transport Group is a not-for-profit theatre company in New York City dedicated to creating intimate works by American writers that illuminate the American experience. Our integrated production elements distill the material to its core. We have been producing plays and musicals, both revivals and new works, since 2002. In 2007 we received a Drama Desk Award recognizing our “breadth of vision and presentation of challenging productions” and a Village Voice OBIE award for excellence in the theatre. Visit our website, [www.transportgroup.org](http://www.transportgroup.org) and find us on Facebook.



**TRANSPORT GROUP:**  
Innovative American Theatre  
[www.transportgroup.org](http://www.transportgroup.org)

Transport Group  
520 Eighth Ave, Ste 305  
New York, NY 10018  
P 212.564.0333  
F 212-564-0331  
[info@transportgroup.org](mailto:info@transportgroup.org)  
[www.transportgroup.org](http://www.transportgroup.org)

## THE CAST

<b>Evan/Rick</b> .....	Stanley Bahorek
<b>Claire/Kate</b> .....	Donna Lynne Champlin
<b>Dempsey/Tour Guide</b> .....	Jonathan Hammond
<b>Grampy/Carney</b> .....	Ryan Hilliard
<b>Dodi/Lily</b> .....	Mamie Parris
<b>Jess/Cutter</b> .....	Nicholas Belton
<b>Lauren/Judy</b> .....	Sally Wilfert

See *Rock City & Other Destinations* is performed without intermission.

**Stanley Bahorek**



**Donna Lynne Champlin**



**Jonathan Hammond**



**Ryan Hilliard**



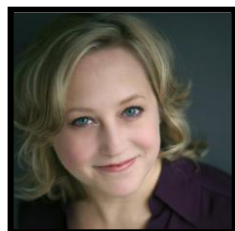
**Mamie Parris**



**Nicholas Belton**



**Sally Wilfert**



See *Rock City & Other Destinations*  
was rehearsed at the New 42<sup>nd</sup> Street Studios

## THE ORCHESTRA

Piano.....	Justin Hatchimonji
Bass.....	Steve Count
Guitar.....	Craig Magnano
Cello.....	Christine Kim

## MUSICAL NUMBERS

"Rock City".....	Jess
"I Can Tell".....	Dodi & Jess
"Mile After Mile".....	Dodi & Jess
"We Are Not Alone".....	Evan
"All There Is To Say".....	Lauren
"Grampy's Song".....	Grampy
"We Are Not Alone (reprise)".....	Evan
"Three Fair Queens".....	Lily, Claire & Judy
"Here".....	Evan
"Q Train to Coney Island".....	Cutter & Rick
"You Are My...".....	Cutter & Rick
"Dark Ride".....	Cutter & Rick
"Niagara Falls - The Tour".....	Tour Guide & Kate
"What Am I Afraid Of?".....	Kate
"Some People Do/Finale".....	Tour Guide, Kate & All

See *Rock City & Other Destinations* was originally developed  
and produced at Barrington stage, Pittsfield, MA  
Julianne Boyd, Artistic Director, William Finn, Artistic Producer  
Musical Theatre Lab

See *Rock City & Other Destinations* was presented at the  
National Alliance for Musical Theatre's Festival of New Musicals  
in 2008.

[www.NAMT.org](http://www.NAMT.org)

**Music by**  
Brad Alexander

**Book & Lyrics by**  
Adam Mathias

**Directed by**  
Jack Cummings III

## THE CREATIVE TEAM

Musical Director/Orchestrator.....Justin Hatchimonji  
Set and Costume Design.....Dane Laffrey  
Lighting Design .....R. Lee Kennedy

## THE COMPANY

Music Coordinator.....Christine Kim  
Production Stage Manager.....Theresa Flanagan  
Assistant Stage Manger.....Michelle Beige  
Production Manager.....Wendy Patten  
Technical Dir./Master Electrician.....Adam B. Orseck  
Assistant Lighting Designer.....John Foster  
Casting.....Alan Filderman  
Managing Producer.....Michelle Ellis  
Press Representative.....Don Summa  
Production Assistant.....Glenda Deabreu  
Assistant to the Artistic Director.....Samantha Saltzman  
Graphic Designer.....Christiaan Rule  
Graphic Designer.....Drew Dernavich

The actors and production stage manager are members of Actors' Equity Association, the union of professional actors and stage managers in the United States.

Present your ticket stub at  
**Angus McIndoe Restaurant**  
and receive a **complimentary glass of wine**  
with any purchase.  
258 West 44<sup>th</sup> Street (b/w 7<sup>th</sup> & 8<sup>th</sup> Ave.)

Valid July 17 – August 8, 2010

## CALENDAR OF EVENTS

### Dark Night Divas on 42<sup>nd</sup> Street

Tickets \$35

**Sun, August 1<sup>st</sup>, 7pm**

Transport Group presents an evening of Broadway's brightest belters singing their favorite songs. Presented at The Duke on 42nd Street, this Dark Night event will benefit Transport Group Theatre Company. Our star-studded lineup will be announced at [www.transportgroup.org](http://www.transportgroup.org) - please visit our website for more information.

### Under 30 Night

Tickets \$30 for patrons under 30

**Thurs. July 29<sup>th</sup>, 8pm**

Join us at See Rock City's **Under 30 Night** on Thursday, July 29<sup>th</sup>. Ticket buyers under 30 enjoy the show, then rock with the cast and crew in a post-show reception featuring live music from cast member **Bryce Ryness** and his band **RYNESS**. **Ticket includes See Rock City performance, RYNESS live concert, cocktails and snacks.** Tickets are \$30 and will not last! Visit [www.Dukeon42.org](http://www.Dukeon42.org) or call 646-223-3010 and mention code **TGUNDER30** at checkout.

**RYNESS** is a 4-piece New York City-based rock outfit striving to connect with the transcendent in Music, Passion, and Spirit. This exclusive performance at The Duke is a rare acoustic concert – it's RYNESS unplugged! RYNESS' live show is not to be missed: influenced by legends as U2, Copeland, Peter Gabriel, Switchfoot and Journey, RYNESS is full of passion, excitement and energy. Led by singer and guitarist **Bryce Ryness**, along with the talents of lead guitarist **Jeff Washburn**, drummer **Robin Lai**, and bassist **Jae Ko**.

**No other place can you See Rock City and see RYNESS all in one night. For more information, visit [www.transportgroup.org](http://www.transportgroup.org) and [www.rynessband.com](http://www.rynessband.com).**

### TG Talks

**Tues. July 27<sup>th</sup>, Wed. August 3<sup>rd</sup> & Wed. August 11<sup>th</sup>**

Meet the cast and creative team for an intimate discussion of the creation of a new musical.

## THE COMPANY

---

**STANLEY BAHOREK** ("Evan/Rick") Broadway: Leaf Coneybear in *The 25th Annual Putman County Spelling Bee*. Off-Broadway: *Inventing Avi* (Abingdon Theatre), Evan/Rick in Transport Group/Richard Rodgers workshop of *See Rock City*. Recent credits: *Candide* in *Candide* (The 5th Avenue Theatre, Seattle), Hunter in [title of show] (Arizona Theatre Company), Mark in *Rent* (Engeman Theatre), Jack in *Into the Woods* (PittsburghCLO), Chad in *Wood* (NYMF), Ralph Malph in *Happy Days*, and *Jim Henson's Emmet Otter* (Goodspeed Opera House), Adam Gwon's *Ordinary Days* (world premiere, PA Center Stage), Henry Krieger and Bill Russell's *Up in the Air* (world premiere, The Kennedy Center), Henri in *A Little Night Music* (Theatre Works, CA), and three seasons with Music Theatre of Wichita. National Tour: Tom Sawyer in DeafWest Theatre's revival of *Big River*, also at Ford's Theatre, ...*Spelling Bee* in Boston and San Francisco. Member of Actors' Equity Association. Graduate of The University of Michigan. [www.stanleybahorek.com](http://www.stanleybahorek.com)

**DONNA LYNNE CHAMPLIN** ("Claire/Kate") Transport Group: *The Dark at the Top of the Stairs* (OBIE Award), *Bury the Dead*, *Marcy In The Galaxy*, *The Audience* and *First Lady Suite*. Broadway: *Billy Elliot*, *Sweeney Todd*, *Hollywood Arms*, *By Jeeves*, *James Joyce's The Dead*. Off-Broadway: *My Life With Albertine*, *Reunion*, *Encores! Bloomer Girl*, Carnegie Hall's *Very Warm For May*, The MET's *Master Class*, *Flight of the Lawnchair Man* (NYMF "Outstanding Performance" Award), *Love Jerry* (NYMF "Outstanding Performance" Award), Broadway *By The Year 1947* and *Broadway Originals* at Town Hall. Recordings include: *Sweeney Todd*, *Albertine*, *Reunion*, *By Jeeves*, *Carols For A Cure*, and *Our Heart Sings*. Critics have called DL's debut CD *Old Friends* "a masterpiece", "haunting and heartbreaking" and voted it "One of the best vocal albums of 2009". Training: CMU (BFA), Oxford University (Shakespeare/Chekhov scholarship). A brand new bride, DL dedicates this performance to her husband, actor Andrew Arrow. [www.donnalynnechamplin.com](http://www.donnalynnechamplin.com)

**JONATHAN HAMMOND** ("Dempsey/Tour Guide") Broadway and National Tours: *Ragtime*, *The Light In The Piazza*. Recent credits: Transport Group's *The Boys in the Band* (OBIE Award and Drama League Award nomination) Kennedy Center: *Ragtime* and Krieger and Russell's world premiere of *Up in the Air*. The Shakespeare Theatre: *The Dog in the Manger*. Off-Broadway: Theatre For A New

Audience, Transport Group, York Theatre. Regional: Actors Theatre of Louisville, McCarter Theatre, Baltimore Center Stage, American Repertory Theatre, Pittsburgh Public Theater, Syracuse Stage, Theatre Works – Palo Alto, Pioneer Theatre Company, Barrington Stage Company, Fulton Opera House, O'Neil Theatre Center. Elliot Norton Award and Outer Critics Circle Award winner. TV: "Law and Order." Training: University of Michigan (Musical Theatre), Harvard University – American Repertory Theatre Institute for Advanced Theatre Training (MFA). [JonathanHammond.com](http://JonathanHammond.com)

**RYAN HILLIARD** ("Grampy/Carney") Most recently played Henri in "Heroes" at the Depot Theatre. He first played Major Bovier in *Grey Gardens* at Playwrights Horizons, then later at Washington's Studio Theatre. Europe: Monsieur Richard in Ken Hill's *Phantom of the Opera*. China: Arvide in *Guys and Dolls*. He played BAM and toured Great Britain as the First Voice in Bill T. Jones adaptation of Flannery O'Connors *Reading Mercy: The Artificial Nigger*. At the Met he played the Major Domo in *Don Pasquale* with Anna Netrebko. He played Mr. Potter in *A Wonderful Life* at the Engeman. Film work: *The Magic Helmet* with Tom Aldredge, *Noise* with Tim Robbins and William Hurt, and Dario Argento's *Inferno*. He is an original member of Emerging Artists Theatre for whom he recently directed "Emily Breathes" which went to the Dublin Gay Play Festival. "It is my great joy to perform for you."

**MAMIE PARRIS** ("Dodi/Lily") Mamie loves road trips. Broadway and National Tour credits include the recent revival of *Ragtime*, *The Drowsy Chaperone*, Roundabout Theatre's *110 In The Shade*, and *Legally Blonde -The Musical*. Also: *Chicago* at the Macau International Music Festival, Macua, China, and two holiday tours with country music icon Kenny Rogers (really). Varied and sundry regional roles including Millie, Rizzo, and Audrey. Numerous readings and workshops, including see *Rock City* (Alexander/Mathias, dir: Kevin DelAguila) and *It Shoulda Been You* (Anselmi/Hargrove, dir: Casey Nicholaw). Many thanks to Jack, Brad & Adam, Tom & Kristen, and more than ever, my Johnathan. "Damaged people are dangerous. They know they can survive." - J. Hart. [www.mamieparris.com](http://www.mamieparris.com)

**NICHOLAS BELTON** ("Jess/Cutter") Broadway: *Hair* (Berger u/s) and the upcoming *Hair* national tour (Berger). Other credits: *Wicked* (Fiyero u/s), *Transport Group*, *Playwrights Horizons*, *Goodman Theatre*, *Long Wharf Theatre*, *Court Theatre*, *Fords Theatre*, *Chicago Shakespeare Theatre*, *Idaho Shakespeare*. Film/TV: *Jail City*, *Guiding Light*. Nick is also a personal chef. [www.boxercook.com](http://www.boxercook.com) (ask for details). Thanks to my big California family and Jack and James Beard!

**SALLY WILFERT** ("Lauren/Judy") Broadway: *Assassins*, *The Adventures of Tom Sawyer*, *Disney's King David*. National Tour: *The 25th Annual Putnam County Spelling Bee*. Off-Broadway: *The Lady in Penthouse B*, *Make Me a Song: The Music of William Finn*, *The Mistress Cycle*, *The Prince & The Pauper*. Other NY: *West Side Story Suite* (NYCB Lincoln Center), *South Pacific in Concert*, *Sondheim Tribute*, *Cole Porter's Jubilee* (all at Carnegie Hall). Original Cast Recordings: *Make Me a Song*, *Assassins*, *King David*, *The Prince & The Pauper*, *A Christmas Survival Guide*, *Sondheim: A Tribute*, *South Pacific in Concert* (both on PBS). Regional: *Les Miserables*, *Marry Me a Little*, *Spelling Bee*, *Make Me a Song* (World Premiere), *The Last Five Years*, *Elegies: A Song Cycle*, *Enchanted April*, *Joyful Noise*, *Amadeus*, to name a few. Television: "Law & Order: Criminal Intent", "Loving", "The Americans" for Comedy Central.

**STEVE COUNT** (Bass) has been a professional bass player for twenty-five years and has performed or recorded on electric/fretless or acoustic bass with Donna Summer, Bette Midler, Toshi Reagon, Ben E. King, Johnny Copeland, Pinetop Perkins, Chita Rivera, Eartha Kit, The Mama's and the Papa's, The Three Mo' Tenors, Debbie Gibson, The October Project, Billy Porter, Daphne Rubin Vega, Tony Trishca, Debbie Harry, Chuck Jackson, the Manhattans, Lloyd Price, Del Shannon, Terrence Mann, and many others. He has appeared on Broadway in *Cry Baby*, *Billy Elliot*, *Mamma Mia*, *Saturday Night Fever*, *Smokey Joe's Cafe*, *the Rocky Horror Picture Show*, *Seussical*, *Bombay Dreams*, *Aida*, *Hairspray*, *Little Shop of Horrors*, *Brooklyn*, *The times they are a'changin*, *The Wedding Singer*. Off-Broadway in *Eli's Coming*, *Johnny Guitar*, *Getto Superstar*, *Once around the Sun*, *Almost Heaven* and has also performed with numerous artists in pops concerts with various symphony orchestras, including the Edmondton Symphony, the San Jose Symphony, the Nashville Symphony and the New York Pops. He has studied electric bass with Lincoln Goines, Jerry Jemmot, Jeff Andrews and acoustic bass with

Homer Mench (principal with New York Philharmonic) and Judy Sugerman (principal with Mostly Mozart). Has appeared on the television shows "The Today Show", "Good day New York" and many others. He is also on the faculty at the Bass Collective.

**CRAIG MAGNANO** (Guitar) Born in upstate NY Craig began playing guitar at 11 years old. He attended Purchase College receiving his B.F.A. in Jazz Performance and then to the Manhattan School of Music where he earned his masters degree. Since moving to New York City, he has been steadily building a career as a freelance guitarist as well as projects of his own. He was a semi-finalist in the 2005 Montreux Jazz Festival Guitar Competition. Craig has played in *Hairspray*, *The Lion King*, *Spring Awakening*, *Rooms*, *Toxic Avenger*, *Altar Boyz*, and *Vanities*. He currently plays for *Jersey Boys*, *Next to Normal* and *Wicked*.

**CHRISTINE KIM** (Music Coordinator/Cello) Grammy nominated Korean American cellist received her BM at the Juilliard School where she studied with Harvey Shapiro and Carter Brey. She made her debut at age 11, which led her to a PBS broadcast for the "Young Musicians Foundation." Post-graduate studies included Maestro Mstislav Rostropovich who then invited Ms. Kim to further her studies in Germany. Professional engagements in Europe have included performances of both Haydn Concertos as well as solo performances in Copenhagen, Munich, and Florence. She is an active and versatile freelance artist in New York. Orchestral performances include New Jersey Symphony Orchestra, American Ballet Theatre, School of American Ballet, and the Metro Chamber Orchestra (principal cello). Current and past appearances on Broadway include: *American Idiot*, *Next to Normal*, *The Addams Family*, *Mary Poppins*, *Phantom of the Opera*, *South Pacific*, *Young Frankenstein*, *Ragtime*, and *Bombay Dreams*. In 2009, Ms. Kim was honored with a Grammy Nomination for her work with the crossover band The East Village Opera Company. She has collaborated with several pop artists including David Foster, Mary J. Blige, Adele, Rod Stewart, Sheryl Crow, Josh Groban, Il Divo, as well as Pavarotti, Andrea Bocelli, and David Garrett. Televised Events as cellist and musical coordinator include the National Football League with 3Doors Down and the Rock and Roll Hall of Fame with Mick Jagger, U2, and Fergie. As Musical Coordinator she has put the orchestras together for Jeff Beck, Kanye West, Clay Aiken, Donna Summers, Dead Can Dance, and

Queensryche, as well as a new TV series *Rubicon*, which is to premiere August 1, 2010 on AMC.

**BRAD ALEXANDER** (Composer) wrote the music for Theatreworks USA's *CLICK, CLACK, MOO* (2010 Drama Desk and Lucille Lortel Award nominee) and *JUST SO STORIES*, as well as songs for *DUCK FOR PRESIDENT*, *IF YOU GIVE A PIG A PANCAKE*, and *WE THE PEOPLE*, opening at the Lortel this summer. He and Adam Mathias received the 2008 Richard Rodgers Award and 2007 BMI Foundation Jerry Bock Award for *SEE ROCK CITY & OTHER DESTINATIONS*, which premiered at Barrington Stage Company and was presented at the 2008 NAMT Festival of New Musicals. Brad's music has also been featured on Sony Records, Showtime's *THE L WORD*, and VH1's "Celebrealty" campaign. "Sugar and Spring," a song he co-wrote with EdibleRed, was the first release off the band's debut CD, *WELCOME TO MY BAD BEHAVIOR*. Brad is a member of The BMI Workshop and National Alliance for Musical Theatre.

**ADAM MATHIAS** (Lyricist & Book Writer) won the 2008 Richard Rodgers Award and 2007 Jerry Bock Award in collaboration with Brad Alexander for *See Rock City & Other Destinations*. He conceived and co-wrote *The Passion of George W. Bush* (2004 NY Fringe Festival; Joe's Pub) and is currently co-writing book for [*The Untitled Dirty Hippie Jam Band Project*]. His work has been performed at The American Airlines Theatre, Birdland, The Triad, The Duplex, The Laurie Beechman, Raw Impressions, Prospect Theater Company, Chicago Dramatist Workshop, and Musicals Tonight by artists including Anthony Rapp, Sarah Ramirez, Gavin Creel, Christian Borle, Mary Testa, Hunter Foster and Malcolm Gets. Recent projects include a new four person adaptation of *Hamlet* for Bakerloo Theatre Project. Adam has a BFA in playwriting from The Theatre School at DePaul University and an MFA in Musical Theatre Writing from NYU Tisch. He is a proud member of the BMI Musical Theatre Writing Workshop (2005 Jerry Harrington Award.) [www.adamup.com](http://www.adamup.com)

**JACK CUMMINGS III** (Director/TG Artistic Director) is the co-founder and Artistic Director of Transport Group. For Transport Group, he has directed *Our Town*, *Requiem for William*, *First Lady Suite* (Drama Desk nomination for Outstanding Revival), *The Audience* (Drama Desk nominations for Outstanding Director and Outstanding Musical), *Normal*, *cul-de-sac*, *All The Way Home*, *The Dark at the*

*Top of the Stairs*, *Crossing Brooklyn*, *Marcy in the Galaxy*, *Being Audrey*, and Mart Crowley's *The Boys in the Band* (2010 Drama Desk Award nominations for Outstanding Director and Outstanding Revival of a Play). Other favorite credits include *1,000 Words Come to Mind*, *See Rock City*, and for television, *A Tale of Two Cities* broadcast on PBS. Regional credits include *Violet*, *Carousel*, *The Young Man From Atlanta*, *She Loves Me*, *The Illusion*, and *A Streetcar Named Desire* (starring his wife, Barbara Walsh, as Blanche). Jack received his MFA in Directing from the University of Virginia and his Bachelor of Arts in International Relations from the College of William and Mary. For DD.

**JUSTIN HATCHIMONJI** (Musical Director) is thrilled to be working with Transport Group again, after participating in last year's workshop of *See Rock City*. Credits include: *Click, Clack, Moo: Cows That Type* (Alexander/Aronson/Del Aguila, 2010 Lortel Award Nomination for Outstanding Musical) – MD/Vocal Arrangements; *The Flood* (Reichel/Mills) – MD; *Party Worth Crashing* (Kerrigan/Lowdermilk) – Orchestrations (with B. Lowdermilk).

**DANE LAFFREY** (Set and Costume Designer) studied at Australia's National Institute of Dramatic Arts and resided in Sydney through the end of 2006. By age 25 he had designed sets and costumes for theatre, film, and dance on four continents. Select recent credits include: *The Boys in the Band* (Drama Desk Nomination), and world premieres of *Inner Voices: Solo Musicals* (Primary Stages/Premieres), *Giant* (Signature), *Sixty Miles to Silver Lake* (SoHo Rep/P73), and *The Roman Spring of Mrs. Stone* (Parco Theatre, Tokyo/Osaka, Japan), as well as many productions in Australia, including *Some Explicit Polaroids* (2006 Sydney Theatre Awards Nomination) and *The Colour of Panic* (Sydney Opera House / Det Apne Theatre, Oslo). Dane has also designed more than 20 dances for The Chase Brock Experience, which have been performed widely in NYC and regionally. Dane is on the advisory committee for Lincoln Center Theatre's LCT3 and has guest lectured in design at prominent universities and conservatories in the U.S. and Australia. Upcoming projects include the world premiere of *Tigers Be Still* (Roundabout). [www.danelaffrey.com](http://www.danelaffrey.com)

**R. LEE KENNEDY** (Lighting Designer) is pleased to be collaborating on his 23<sup>rd</sup> production over sixteen years with Director Jack Cummings and other Transport Group artists. Off-Broadway: *Bury the Dead* (Drama Desk nomination), *Marcy in the Galaxy*, *The Dark at the Top of the Stairs*, *All the Way Home*, *Normal*, *The Audience* (Drama Desk nomination), *First Lady Suite*, *Requiem for William*, *Our Town*. National Tours: *The Secret Garden*, *Once on This Island*, *Five Guys Named Moe*, *A Grand Night for Singing*. Chicago: *Assassins*, *The Secret Garden* (Joseph Jefferson Citation for Lighting Design), *Once on This Island* (Joseph Jefferson Citation Recommended for Lighting Design) (Pegasus Players), *Oklahoma*, *The Sound of Music* (Marriott's Lincolnshire Theatre), *Mud* (Victory Gardens Theatre). Regional: *The Light in the Piazza* (Philadelphia Theatre Company), Illinois Shakespeare Festival (2006, 2008, 2009 repertory seasons), Barksdale Theatre, Heritage Repertory Theatre, LiveArts, Nevada Theatre Company. Lee heads the MFA lighting design program at The University of Virginia.

**THERESA FLANAGAN** (Production Stage Manager) is thrilled to be working on *See Rock City* again after stage managing the workshop last year. This is her 6<sup>th</sup> production with Transport Group. Other credits include work with Lyric Theatre of Oklahoma, Urban Stages, Bay Street Theatre, Boomerang Theatre Company, Clubbed Thumb, NYMF, Fringe, a national tour and *Rosie O'Donnell's Broadway Extravaganza* at The Palace. Proud AEA member.

**MICHELLE BEIGE** (Assistant Stage Manager) is thrilled to be a part of another Transport Group production! Other credits include: PA for Transport Group's *The Boys in the Band*, Production Stage Manager for Damocles Production's *Acting Alone*, and *Sex and the Holy Land* at NYC Fringe Festival. She is a graduate of the University of Miami's stage management program, where she worked on a plethora of productions, including *Pride and Prejudice: the Musical*, directed by Mark Lamos.

**WENDY PATTEN** (Production Manager) This is Wendy's ninth show with Transport Group having previously stage managed *The Boys in the Band*, *Being Audrey*, *Bury the Dead*, *Marcy in the Galaxy*, *Crossing Brooklyn*, *The Dark at the Top of the Stairs*, *The Audience*, and *First Lady Suite*. She has stage managed over 30 productions including *Something Cloudy, Something Clear*, *The Last Starfighter*, *Spokesong* and *The Ninth Circle*. Wendy is a proud member of AEA.

**ADAM B ORSECK** (Technical Director/Master Electrician) is very pleased to be joining Transport Group for their production of *See Rock City*. Previous credits include: Technical Director for American Family Theatre; Master Electrician for *Encore* at Chamber Theatre Productions; Master Carpenter for West Virginia Public Theatre; Technical Director for Theatre on the Hill; Master Electrician for Kiss Theatre Productions.

**ALAN FILDERMAN** (Casting) Broadway: *33 Variations*, *Grey Gardens*, *Marie Christine*, *Master Class*, *Once On This Island*. Off-Broadway: *Dessa Rose*, *Here Lies Jenny*, *Listen to My Heart*, *Miss Evers Boys*, *A New Brain*, *A Beautiful Thing*, *Three Tall Women*, *From the Mississippi Delta*, *Song of Singapore*, *The Sum of Us*. Many Regional Theatres across the United States. Film: *Ice Age*, *Broadway Damage*, *Anastasia*.

**DON SUMMA** (Press Representative)

**LORI FINEMAN** (TG Executive Director) worked in management consulting for Andersen Consulting and Capco, a financial services consulting firm, prior to coming to Transport Group. As a producer, Lori was a founding member of Muse of Fire Productions and the Co-Executive Director of the National Women's Theater Festival in Philadelphia. Lori has also worked professionally as an actor, yoga instructor, and choreographer. Lori serves on the Board of Directors of the Jewish Community Project Downtown. Lori is a graduate of the University of Pennsylvania. Favorite roles: mom to Dylan & Spencer and wife to Steve.

**KRISTINA CORCORAN WILLIAMS** (Dramaturg/TG Literary Manager) is the resident Dramaturg and Literary Manager for Transport Group. Recent dramaturgy credits include the world premiere of José Rivera's *Boleros for the Disenchanted* and Bruce Norris' *The Unmentionables* at Yale Repertory Theatre where she served as Literary Associate from 2007-2009. She has previously worked with Madison Repertory Theatre (world premiere of Sarah Ruhl's *Eurydice*) the LARK (Lloyd Suh's *American Hwangap*), TCG and Primary Stages. She recently served as a research assistant for Paula Vogel's *A Civil War Christmas*. She is on the summer theatre faculty at Interlochen Center for the Arts and holds an MFA in Dramaturgy from Yale School of Drama.

**MICHELLE ELLIS** (Managing Producer/TG Development Associate) has been a member of the Transport Group team for *Bury the Dead*, *Being Audrey*, *The Boys in the Band*, and is thrilled to have worked on *See Rock City*. Michelle has also worked administratively with The American Theatre Wing's award-winning SpringboardNYC program, Jonathan Larson Grant, and the Theatre Intern Group, among other projects. She has performed and puppeteered for two seasons with Shadow Box Theatre at Bleecker Street Theatre. Graduate of Sarah Lawrence College (BA; Concentration in Theatre and German).

**GLENDIA DEABREU** (Production Assistant) has had a love for the theatre since she was a child, singing and performing in various venues and productions. Her love for the arts has continued into adulthood having worked on many productions such as *The Glass Menagerie*, *The Understudy*, *Speech and Debate*, and *Cabaret* just to name a few. I would like to thank Transport Group for the opportunity to work with such a wonderful team. I would like to dedicate this to my children, my family and friends, and to POP OFF ENT, you inspire me and motivate me every day. Thanks for your continued love and support.

**SAMANTHA SALTZMAN** (Assistant to the Director)

**NIC DRIS** (TG Marketing Intern) is a second-year MFA candidate at New York University's Graduate Musical Theater Writing Program. Nic wrote the book and lyrics for a one-act musical, *Little Boxes*, which recently held a staged reading at NYU. Other writing credits include a one-act play, *Cinderella's Will*, received a production at the Gorilla Theatre, and *True Man*, a musical based on the life and early times of Truman Capote. As an essayist and published poet, Nic's poem "Men's Showers (Men Only)" can be seen at EverydayPoets.com, an online literary magazine. Nic is currently working on his thesis musical and a one-act children's play, *Willy Shakes in the Park!* He received his BA in Theatre and Creative Writing at Florida State University. Member: Dramatists Guild of America. [www.nicholasdris.com](http://www.nicholasdris.com).

**CHRISTIAAN RULE** (Graphic Designer)

**DREW DERNAVICH** (Graphic Designer)



## 2009-2010 SEASON CONTRIBUTORS

Transport Group gratefully acknowledges the contributions of all of our supporters.

---

**Transport Group recognized the following individuals for their generous support of *See Rock City & Other Destinations*.**

### Rock City Circle Producers

Transport Group gratefully acknowledges the following people for their generous contribution to this production:

**Benjamin D. Goldberg & Jennifer Orr**

**DIRECTOR LEVEL** (\$5,000-\$9,999) Sarah Ackerman, Anne Bernstein, Joanne & Ron Falcon, Barbara & Buddy Freitag, Robert Greenblatt, Kevin McCollum, New York City Department of Cultural Affairs, Richard Page, Ted Snowden, Harold & Mimi Steinberg Charitable Trust

**PRINCIPAL LEVEL** (\$2,000-\$4,999) Irene Carney & Fred Orelove, Tamar Copeland, Creative Artists Agency – George Lane & Joe Machota, Thomas Cunningham, Jeff Davis, The Dorothy Loudon Foundation, The Dorothy Strelsin Foundation, Lori & Steve Fineman, Shawn & Rob Flowers, Frederick Loewe Foundation, Carole Shorenstein Hays, Francesca James, Yael & Nick Jekogian, JP Morgan Chase Fund for Small Theatres, Tom Koltis, Louis Kunsch, Claire Labine, Gregory Maguire & Andy Newman, Scott & Karen Manville, Annette Niemtow & Eve Ellis, Dolly Parton, Rory Stanton, Ellen & Ron Weiss

**CHAMPION LEVEL** (\$1,000-\$1,999) Barbara & Andy Andres, William David Bohn, Javier Bustillos, Mary Mohler Carlson, Stockard Channing, Samara & Adam Cohen, Alexander Dodge, Christina & Jim Donnell, Sanford Dumain, Steven Ernst, Victoria & Ben Feder, Jacki Florin, Robert Fried, Alan Garfield, Jean Garner & Daniel Chiplock, Nancy Gibbs, Winnie Holzman, Jackie & Philip Horowitz, Anthony Kiser, Jana & Gerold Klauer, Sandra Kozlowski, Angela Lansbury, Robert G Liggett, Joanna & Josh Lipman, Joe Mantello, W Edward Massey, Hawley & John McAuliffe, James L. Nederlander, Gilbert Parker, Adam Perlman, Lee Perlman, Hal Prince, Janet B Rosen, Jordan Roth, Marc Shaiman, The Shubert Organization, Brande & David Stellings, Ariana J Tadler, Frederic Weiner, William Morris Endeavor Entertainment

**STAR LEVEL** (\$500-\$999) Michelle Ackerman, Emmy Altman, Lisa & Avi Berg, Scott Berrie, Loriane Boyle, Holly Peterson Breeden, Tamar Copeland, Suzanne Day, Rita Denerstein, Dramatists Guild Fund, Inc., Tracie Golding Gerson & Brian Gerson, Jane Griffin, Todd Haimes, Jonathan Herzog, Melissa Hilfers, The John F. Kennedy Center For The Performing Arts, John Kander, Rima Khalil, Denise Koltis-Dushas, Monica Blaze Leavitt, Margo Lion, William Ivey Long, Stacey Mindich, Gwendolyn Marx, Jenny Needelman & Jonathan Selbin, Stephen Oremus, Scott Pask, Philadelphia Theatre Company, Marc Platt, J Rodney Pleasants, Laura Popper, Daryl Roth, Nathalie Rubens & Saul Goodman, Stanley Schulman, Stephen Schwartz, Michael Sherman, David Stone, Michael Thomas, Stuart Thompson, Jennifer Urquhart, Viertel/Frankel/Baruch/Routh Group, Robert Weintraub

**HEADLINER LEVEL** (\$250-\$499) Rati Bahadur, Jon Robin Baitz, Nancy H Biddle, Mary S Bleiberg, Larry Burnett, Scott M. Delman, Kelly Dermody, Jamie deRoy, Rosalind Devon, Paul Dobie, Tal Fagin, Wendy Federman, Ed & Barbara Fineman, J Ryan Fitzpatrick, Christie Ford, Marla Franzese, David Greenspan, Julia Hansen, Ivan Helfand, Megan Hilty, Lawrence Hirschhorn, Nancy Horowitz, Tracy Hutt & David Becker, Stacey A. Kinnamon, Morgan LaVere, Lisa Leguillou, Nicki Locker, Jennifer London, Nicole & Mike Marra, Kenneth Posner, Casey Ribicoff, Carole Sadler, James Sansum, Molly & Andy Snyder

**PATRON LEVEL** (up to \$250) Shana Albery, Nicole Alifante, Courtney Allison & David Horowitz, Hope Washton August, Stanley Bahorek, Dylan Baker, Hunter Bell, Joyce Bodenstein, Patrick Boll, Julie Boyd, Broadway League, Walter Burr, David Byrd, John Cariani, Mark Campbell, Virginia Clark, Jeremy Cooke, Jack Cummings III, James Dahlinger, John Eisner, Michelle Ellis, Alexander Firestone, Flynn Household, Teresa Lee Fowler, Elliot Fox, Dennis Gallagher, Carol & Jerold Gertz, Aliette Goldmark, Pamela Grayson, John Green, Sheldon Harnick, Jim Hindman, Dianne & Steven Horowitz, Molly Jones, Robert Karp, Ginger Komar, Michael Koslow, Robert LaMont, Susan Lehman, Jane Levinson, Michele Lowe, Nazira Lyrio, Mary Elizabeth Mastrantonio, Scott McDuffie, Rick McKay, Terrence McNally & Thomas Kirdahy, Brian Stokes Mitchell, Kerry O'Malley, Wendy Patten, Caitlyn Phillips, Alexa & Terry Ragsdale, Vanessa Rector, L. Paul Robertson, Rock of Ages Broadway LLC, Robert Sandefur, Ed Sandler, David Schneider, Megan Schwarz, Kathleen Duffy Smith, John Sola, Jeffrey Steinman, Charles Stewart, The Swig Foundation, Rica Tarnoff, Thomas Viola, Duffy Violante, Thomas Max Von Essen, Richard Warner, Allison Wiener, Kenneth Winter

---

**Transport Group is honored to have received funding from the following organizations:**

American Theater Wing  
Dramatists Guild Fund, Inc.  
Conrad N. Hilton Foundation  
The Dorothy Loudon Foundation  
The Frederick Lowe Foundation  
The Geraldine Stutz Family Trust  
JP Morgan Chase Fund for Small Theatres  
The National Endowment for the Arts  
New York City Department of Cultural Affairs  
New York State Council on the Arts  
Jerome Robbins Foundation  
The Dorothy Strelsin Foundation  
The Shen Family Foundation  
The Shubert Foundation  
Ted Snowdon Foundation  
The Harold & Mimi Steinberg Charitable Trust  
*The Village Voice* OBIE Awards

Tax-deductible contributions can be mailed to:

**Transport Group Theatre Company**

520 Eighth Avenue, Suite 305  
New York, NY 10018

(212) 564-0333 - info@transportgroup.org

**www.transportgroup.org**

## The First One Hundred

Our culture will be defined by the depth of its patronage

Dear Friend,

Transport Group is asking its most ardent supporters to join like-minded patrons and become a member of The First One Hundred. This is a five-year gift to Transport Group that will be given once a year for the next five years, enabling us to plan our budgets more efficiently. Your contribution will be listed in all of our published materials as a member of The First One Hundred.

Barbara & Buddy Freitag generously gave us our first gift of \$25,000. Your gift is important to us, as long as you repeat the gift for five years. It represents faith in our future, a future I hope you will share with us.

Sincere thanks,

**Jack Cummings III**  
Artistic Director

**Lori Fineman**  
Executive Director

**The First One Hundred** represents a gift to Transport Group for five consecutive years

**The First One Hundred (\$25,000+)**  
Sarah Ackerman, Anne L. Bernstein,  
Hope Byer, Barbara & Buddy Freitag

**The First One Hundred (\$12,500)**  
Joanne & Ron Falcon

**The First One Hundred (\$1,000)**  
Barbara & Andy Andres

## TRANSPORT GROUP

---

### ARTISTIC DIRECTOR

Jack Cummings III

### BOARD OF DIRECTORS

Annette Niemtow (Co-Chair)  
Ellen Weiss (Co-Chair)  
Sarah Ackerman  
Anne L. Bernstein  
Irene Carney  
Jack Cummings III  
Tom Cunningham  
Jeff Davis  
Shawn Flowers  
Lori Fineman  
Barbara Freitag  
Francesca James  
Yael Jekogian  
Tom Koltis  
Scott Manville  
Richard Page  
Rory Stanton

### LITERARY MANAGER & DRAMATURG

Kristina Corcoran Williams

### ARTISTIC ADVISORY BOARD

Brian Crawley  
John Dossett  
John Clinton Eisner  
Shawn Elliot  
Paulette Haupt  
David Hirson  
Michael John LaChiusa  
Donna Murphy  
Gilbert Parker  
Michele Pawk  
Christopher Shinn

### EXECUTIVE DIRECTOR

Lori Fineman

### ASSOCIATE ARTISTS

Yvonne Adrian, Nicole Alifante,  
Barbara Andres, Adam Bock,  
Mark Campbell, John Cariani,  
Donna Lynne Champlin,  
Jack Donahue,  
Jennifer Gibbs, Jenny Giering,  
Chris Harcum, Michael Klimzak,  
Tom Kochan, Mark Ledbetter,  
Tom Lignon, Joanna Lipman,  
Richard Martin,  
Matthew Nowosielski,  
Christine O'Grady,  
Joanna Parson, Shannon Polly,  
Monica Russell, Julie Siefkes,  
Cheryl Stern,  
Jonathan Uffelman,  
James Weber, Ellen Weiss,  
John Wellmann,  
Gregg Wiggans, Matt Yeager

### DEVELOPMENT ASSOCIATE

Michelle Ellis

### GRANT WRITER

Ivan Helfand

### MARKETING INTERN

Nic Dris

### GRAPHIC DESIGNERS

Drew Dervavich  
Christiaan Rule

### Transport Group is represented by

The public relations firm of  
**Richard Kornberg & Associates**  
Don Summa, representative

The accounting firm of  
**Eisenkraft CPA & Assoc**  
Gary Eisenkraft, CPA

**The Herzog Law Group**  
Jonathan Herzog, Esq.

**Tom J. Koltis, Esq.**

### Transport Group extends special thanks to:

Ryan Corvaia and DISH Food & Events,  
Dorothy Champlin, Arthur & Lorraine Hart, Michele Pawk,  
Nancy Shayne, Beth & Vincent Curran, Patty & Billy  
Nolan, Beth Pappas, Elizabeth Goldenberg, John Ou,  
Greg Santos & John Wolfe, Josh Young, Phoebe Strole,  
Kerry O'Malley, & Heather Ayers, Jane Bolster, Virginia  
Dajani, Alma Malabanan-McGrath, Isaac Oliver, Danielle  
Dybiec, John Brothers, Steve Fineman, Barbara Freitag,  
Stephanie Polisenio, Ean Murphy, Jonathan Herzog,  
Nic Dris, Elliott Krowe/BML - Blackbird,  
Brendan Gray, Mickie Marie, Meg Kissel,  
University of Virginia Department of Drama

### The writers wish to thank:

Jill Abramovitz, Benjamin Schrader, Gwen Hollander,  
Cassie Wooley, David Rossmer, John Jellison, Wesley  
Taylor, The BMI Lehman Engel Musical Theatre Workshop,  
Richard Maltby, Jr., Jerry Bock, Branden Huldeen, Frank  
Evans, Musical Mondays Theatre Lab, Kevin Del Aguila,  
Vadim Feichtner, Aron Accurso, Jeremy Jordan, Tesha  
Buss, Raw Impressions, Inc., David Rodwin, Masi Asare,  
Baldwin Wallace College, University of Michigan

**For more information about Transport Group's staff, history, awards and previous productions, please visit our website:**

[www.transportgroup.org](http://www.transportgroup.org)



This production is supported in part by public funds from the New York State Council on the Arts and the New York City Department of Cultural Affairs, in partnership with the City Council.



Transport Group is a member of A.R.T./NY: The Alliance of Resident Theatres/New York, the service organization for New York City's not-for-profit Off Broadway theatres.

